

# EZ-Up™ Assisted Lift Vertical Rack

## PRODUCT CODE

10101347

## CAPACITY

1 Bike or eBike up to 65 lbs. (29.5 kg)

## MATERIALS

Steel

## MINIMUM HEIGHT

76.75" (195 cm)

## WEIGHT

20 lbs. (9 kg)

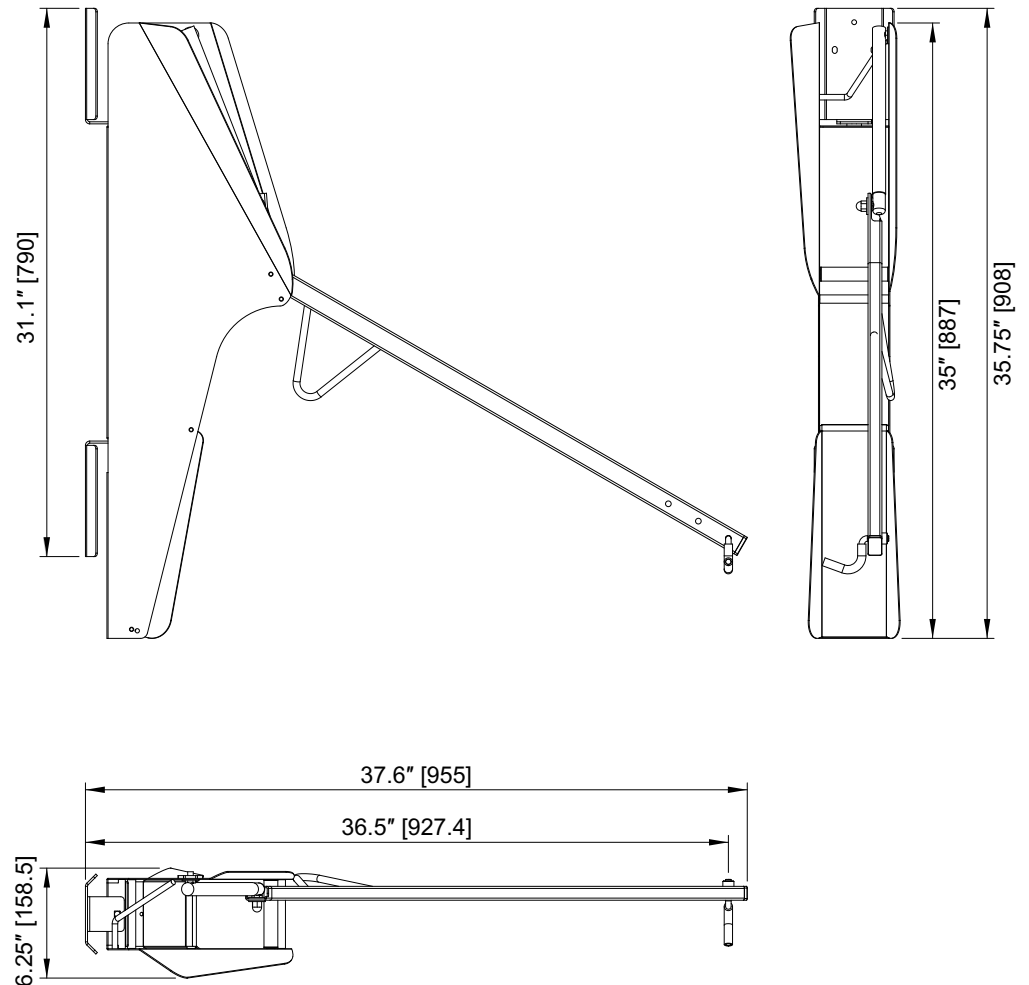
## FINISHES

- ☐ Powder Coated ANY STANDARD RAL
- ☐ Galvanized
- ☐ Stainless

## SPACING REQUIREMENTS

For recommendations and details on clearances and aisle widths please refer to the [APBP Bicycle Parking Guide](#) or your local ordinances and guidelines.

Drawings are for information purposes only and while accurate at the time of creation, Kinetic Parking Solutions, Inc. must confirm its accuracy prior to submission.



# EZ-Hang™ Vertical Rack – Round Tube

## PRODUCT CODE

10101300

## CAPACITY

1 Bike

## MATERIALS

Round Steel Pipe  
1.625" OD (Ø41.3 mm)

## THICKNESS

0.091" (2.3 mm)

## WEIGHT

16.98 lbs. (7.71 kg)

## FINISHES

- ☐ Powder Coated ANY STANDARD RAL
- ☐ Galvanized 10101303
- ☐ Stainless

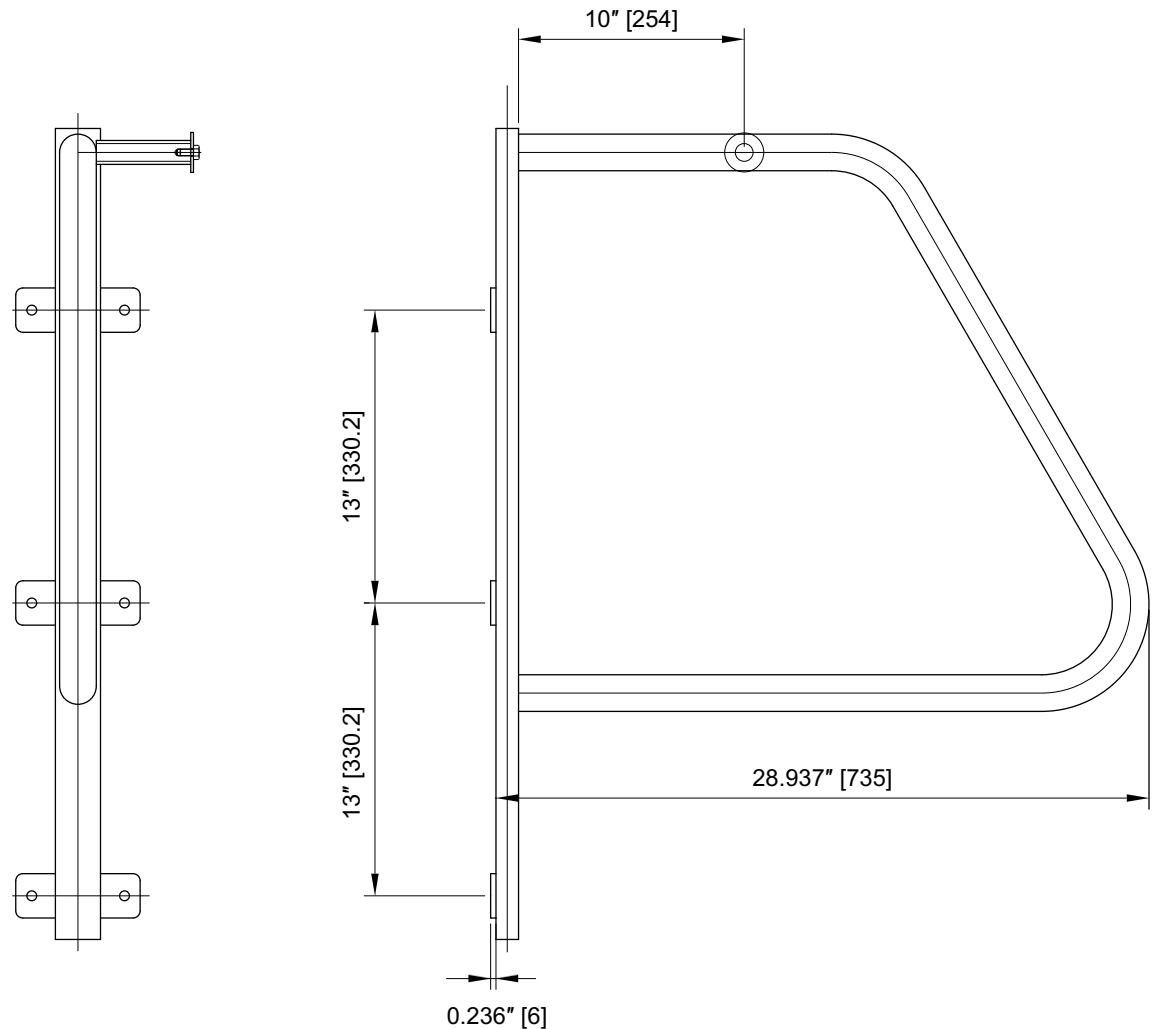
## OPTION

- ☐ Tamper proof nuts

## SPACING REQUIREMENTS

For recommendations and details on clearances and aisle widths please refer to the [APBP Bicycle Parking Guide](#) or your local ordinances and guidelines.

Drawings are for information purposes only and while accurate at the time of creation, Kinetic Parking Solutions, Inc. must confirm its accuracy prior to submission.



# EZ-Hang™ Vertical Rack – Rectangular Tube

## PRODUCT CODE

10101304

## CAPACITY

1 Bike

## MATERIALS

Rectangular Steel Tube  
0.98" x 1.97" (25 mm x 50 mm)

## THICKNESS

0.098" (2.5 mm)

## WEIGHT

19.47 lbs. (8.84 kg)

## FINISHES

- ☐ Powder Coated ANY STANDARD RAL
- ☐ Galvanized 10101307
- ☐ Stainless

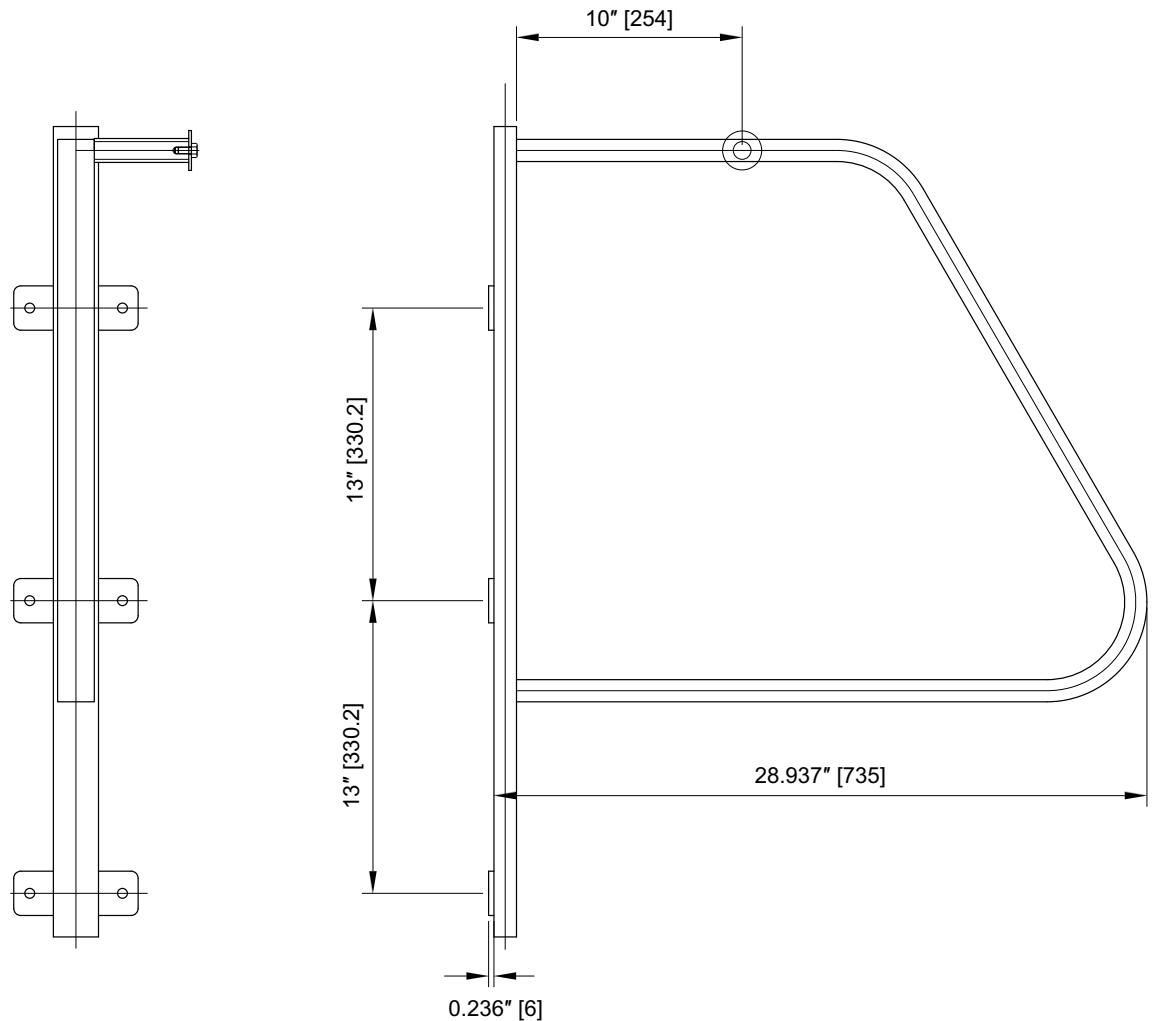
## OPTION

- ☐ Tamper proof nuts

## SPACING REQUIREMENTS

For recommendations and details on clearances and aisle widths please refer to the [APBP Bicycle Parking Guide](#) or your local ordinances and guidelines.

Drawings are for information purposes only and while accurate at the time of creation, Kinetic Parking Solutions, Inc. must confirm its accuracy prior to submission.



# EZ-Hang™ 3/6 Vertical Infrastructure 16" (40 cm) OC

## PRODUCT CODE

CUSTOM

## CAPACITY

3 Bikes Single-Sided  
6 Bikes Double-Sided

## MATERIALS

Square Tube

For rack specifications, visit  
[Kinetic Vertical Bike Racks](#)

## THICKNESS

0.154" (3.91 mm)

## FINISHES

- ☐ Powder Coated ANY STANDARD RAL
- ☐ Hot-dipped Galvanized

## OPTIONS

- ☐ Tamper proof nuts

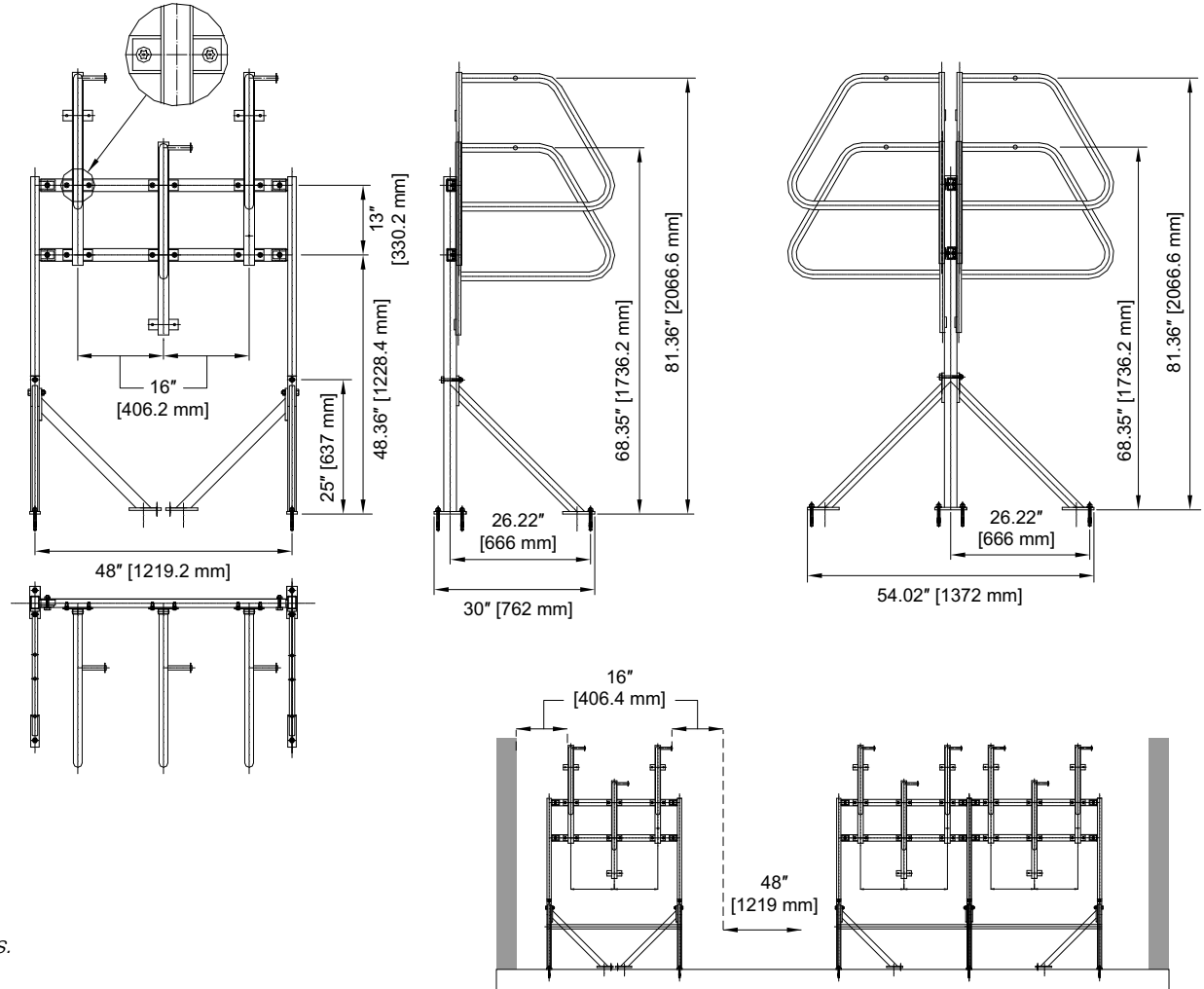
## SPACING REQUIREMENTS

For recommendations and details on clearances and aisle widths please refer to the [APBP Bicycle Parking Guide](#) or your local ordinances and guidelines.

### *Need different On-Center Requirements?*

*We can configure any EZ-Hang to your custom specifications.*

Drawings are for information purposes only and while accurate at the time of creation, Kinetic Parking Solutions, Inc. must confirm its accuracy prior to submission.



# EZ-Hang™ 3/6 Vertical Infrastructure 18" (45 cm) OC

## PRODUCT CODE

CUSTOM

## CAPACITY

3 Bikes Single-Sided  
6 Bikes Double-Sided

## MATERIALS

Square Tube

For rack specifications, visit  
[Kinetic Vertical Bike Racks](#)

## THICKNESS

0.154" (3.91 mm)

## FINISHES

- ☐ Powder Coated ANY STANDARD RAL
- ☐ Hot-dipped Galvanized

## OPTIONS

- ☐ Tamper proof nuts

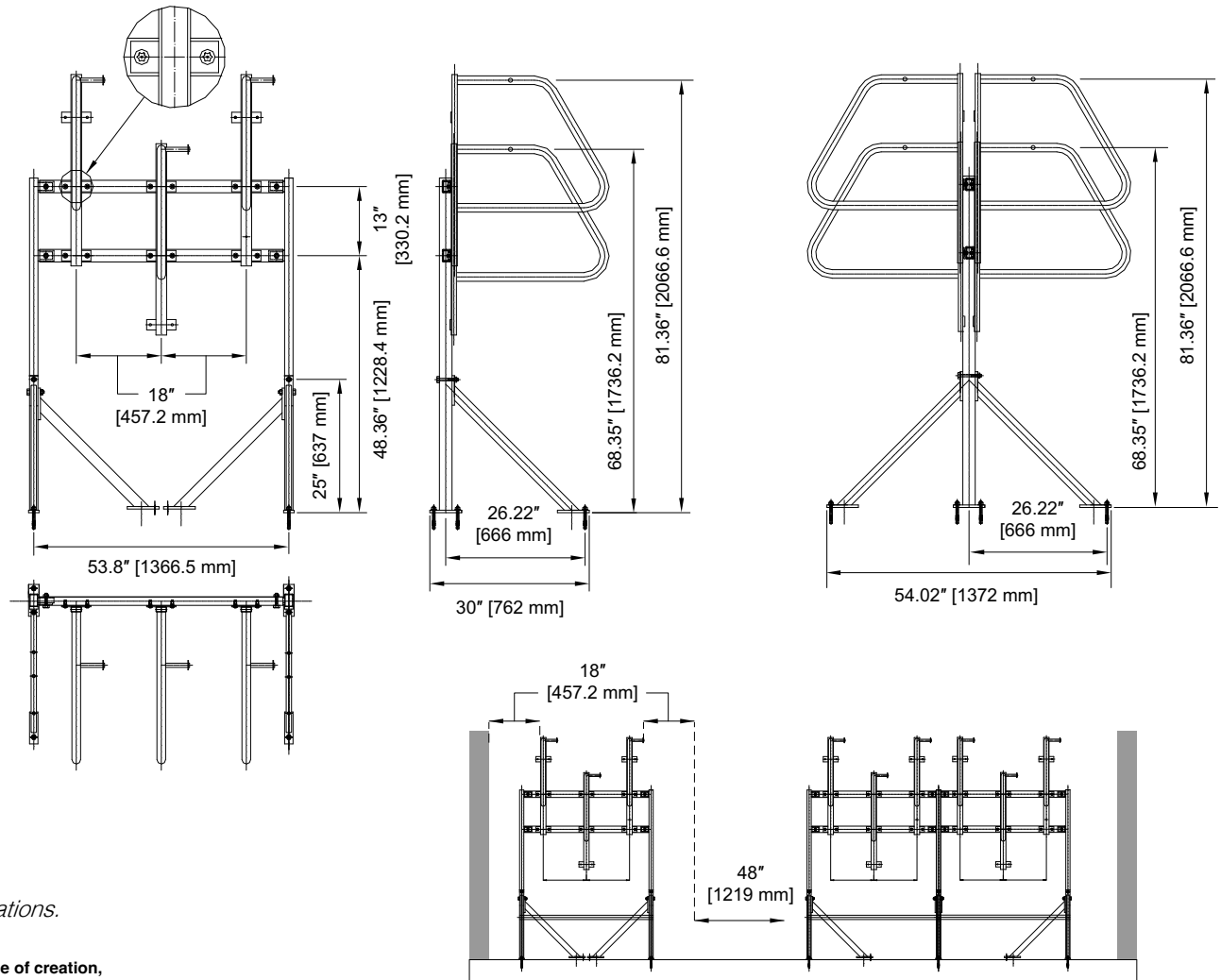
## SPACING REQUIREMENTS

For recommendations and details on clearances and aisle widths please refer to the [APBP Bicycle Parking Guide](#) or your local ordinances and guidelines.

### Need different On-Center Requirements?

We can configure any EZ-Hang to your custom specifications.

Drawings are for information purposes only and while accurate at the time of creation, Kinetic Parking Solutions, Inc. must confirm its accuracy prior to submission.



# EZ-Hang™ 4/8 Vertical Infrastructure 16" (40 cm) OC

## PRODUCT CODE

CUSTOM

## CAPACITY

4 Bikes Single-Sided  
8 Bikes Double-Sided

## MATERIALS

Square Tube

For rack specifications, visit  
[Kinetic Vertical Bike Racks](#)

## THICKNESS

0.154" (3.91 mm)

## FINISHES

- ☐ Powder Coated ANY STANDARD RAL
- ☐ Hot-dipped Galvanized

## OPTIONS

- ☐ Tamper proof nuts

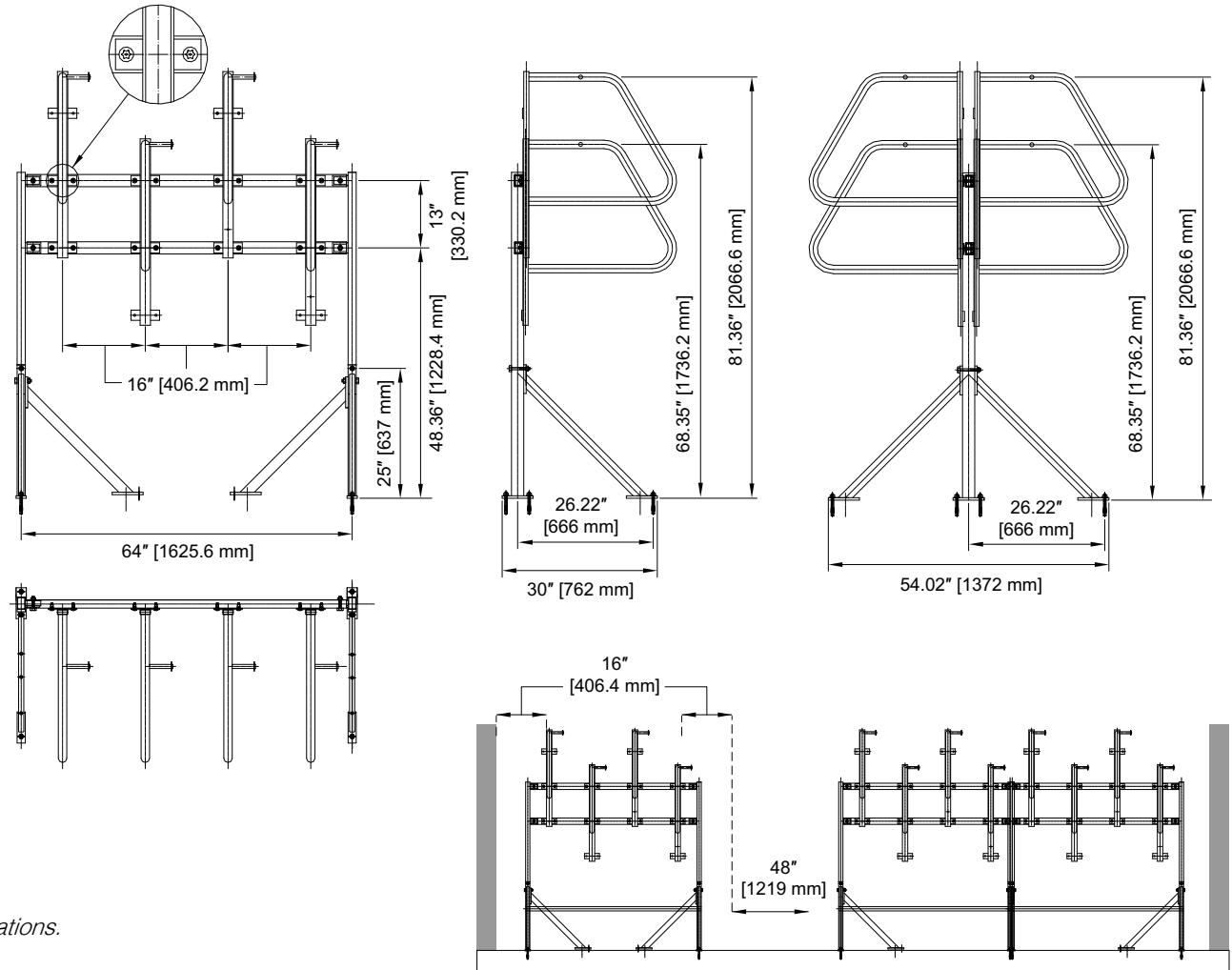
## SPACING REQUIREMENTS

For recommendations and details on clearances and aisle widths please refer to the [APBP Bicycle Parking Guide](#) or your local ordinances and guidelines.

### *Need different On-Center Requirements?*

*We can configure any EZ-Hang to your custom specifications.*

Drawings are for information purposes only and while accurate at the time of creation, Kinetic Parking Solutions, Inc. must confirm its accuracy prior to submission.



# EZ-Hang™ 4/8 Vertical Infrastructure 18" (45 cm) OC

## PRODUCT CODE

CUSTOM

## CAPACITY

4 Bikes Single-Sided  
8 Bikes Double-Sided

## MATERIALS

Square Tube

For rack specifications, visit  
[Kinetic Vertical Bike Racks](#)

## THICKNESS

0.154" (3.91 mm)

## FINISHES

- ☐ Powder Coated ANY STANDARD RAL
- ☐ Hot-dipped Galvanized

## OPTIONS

- ☐ Tamper proof nuts

## SPACING REQUIREMENTS

For recommendations and details on clearances and aisle widths please refer to the [APBP Bicycle Parking Guide](#) or your local ordinances and guidelines.

### *Need different On-Center Requirements?*

*We can configure any EZ-Hang to your custom specifications.*

Drawings are for information purposes only and while accurate at the time of creation, Kinetic Parking Solutions, Inc. must confirm its accuracy prior to submission.

